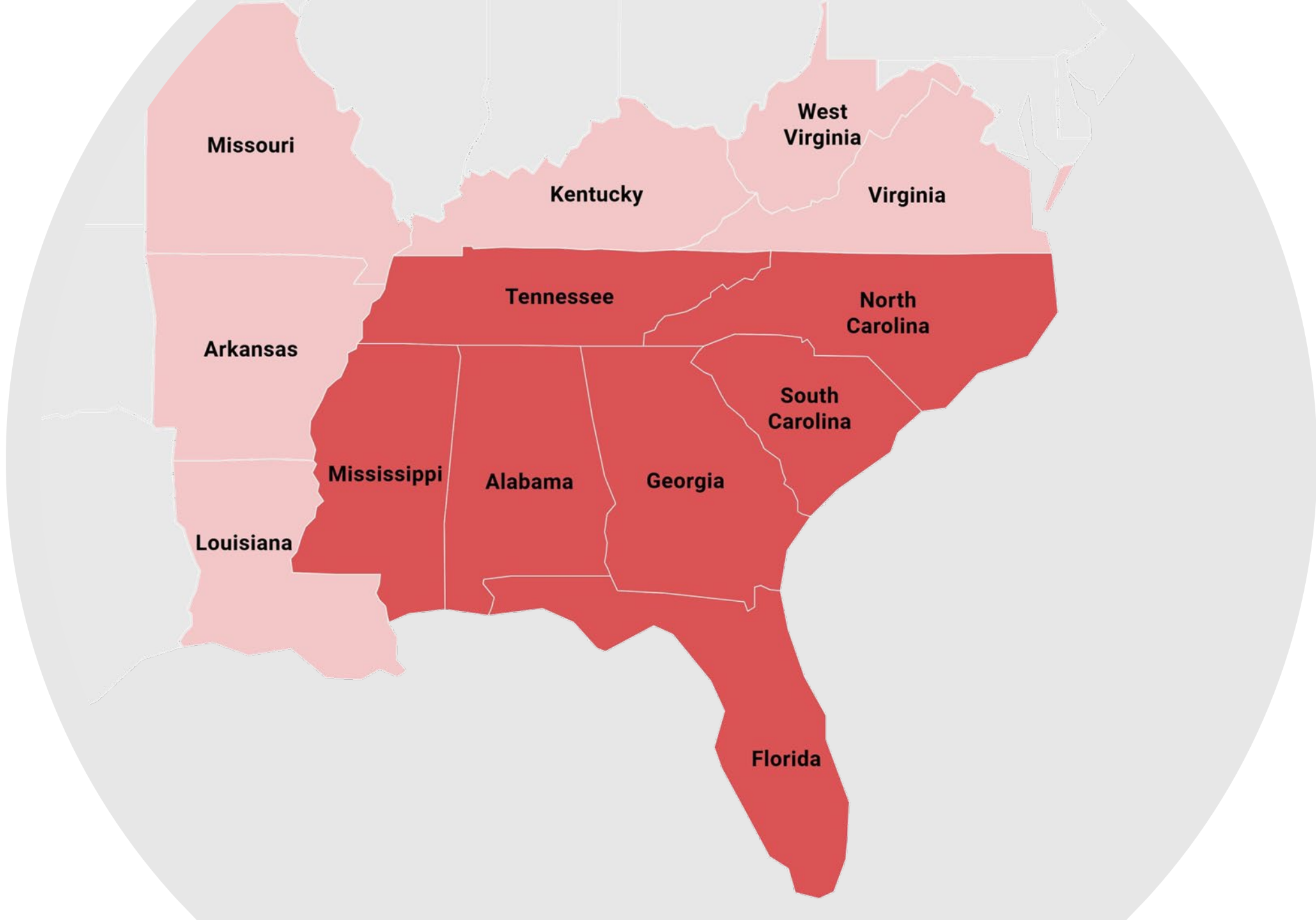


Mississippi Priorities for NAAQS Implementation

AAPCA 2022 Spring Meeting

April 28, 2022





STATES OF EMERGENCY IN GEORGIA



HURRICANE DORIAN

FLORIDA ON HEIGHTENED ALERT FOR HURRICANE DORIAN

Expected to slam into state's east coast as Cat-4 storm on Monday

LIVE

CNN

5:01 AM ET





Mississippi

The Hospitality State

The Magnolia State

The Birthplace of America's Music



State Implementation Plan for Infrastructure (iSIP)

- EPA recently published their intention to disapprove our 2015 O₃ iSIP
- Good Neighbor Provisions
- EPA modeling claims that Mississippi has a “Significant Impact” on 3 monitoring sites in Texas – one in the Dallas CBSA and 2 in the Houston CBSA



Nonjudgmental comparisons



Nonjudgmental comparisons

Aircraft Operations per day

DFW – Over 1,709

George Bush International – 1,104

Jackson International– 154

Golden Triangle Regional – 158

Gulfport International – 131

Stennis International – 88

Population

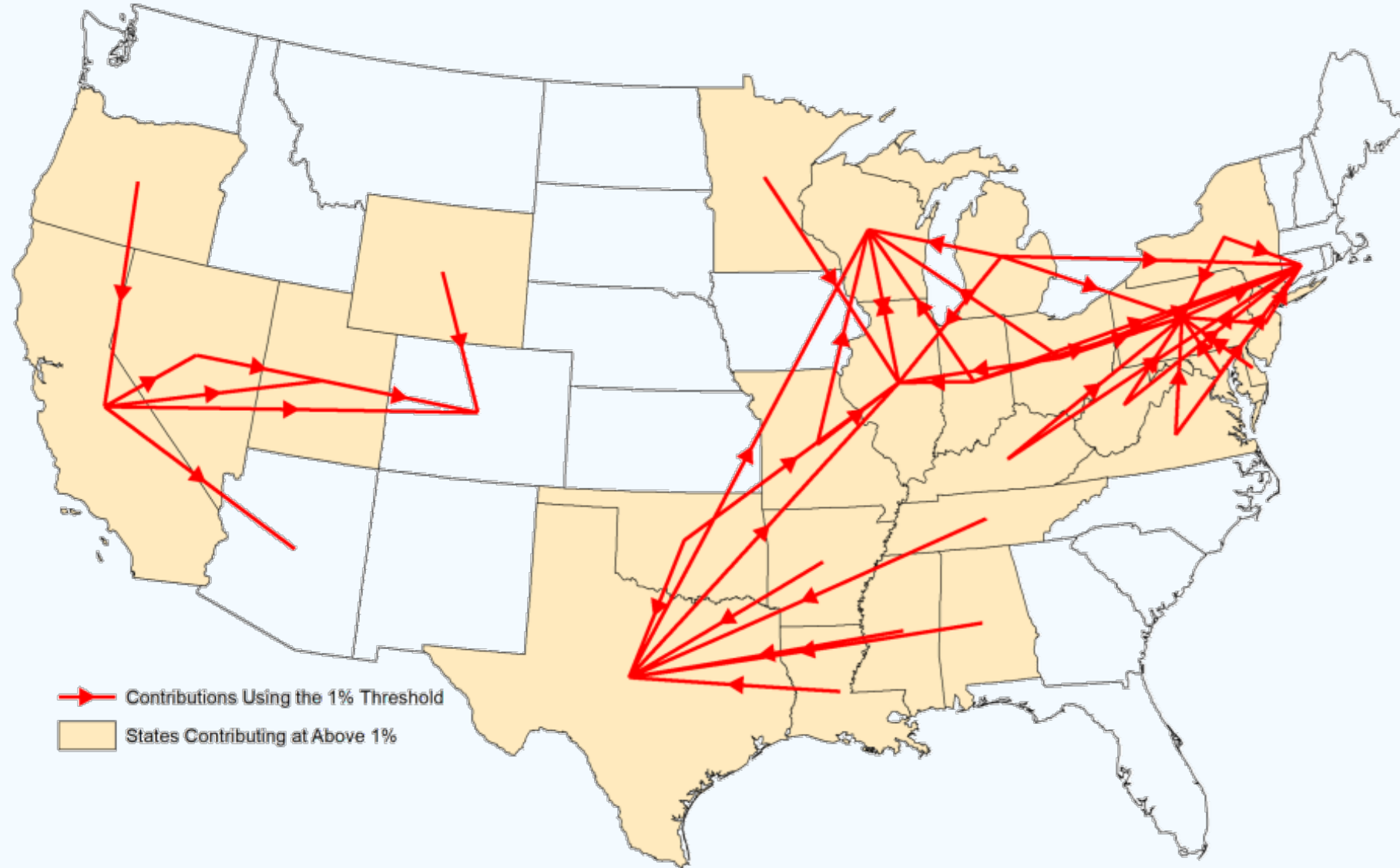
Dallas/Ft Worth CBSA - 7,637,387

Houston CBSA - 6,803,630

Mississippi - 2,949,965



“Upwind States Contributing Above 1% to Downwind States in 2023 for the 2015 Ozone NAAQS”



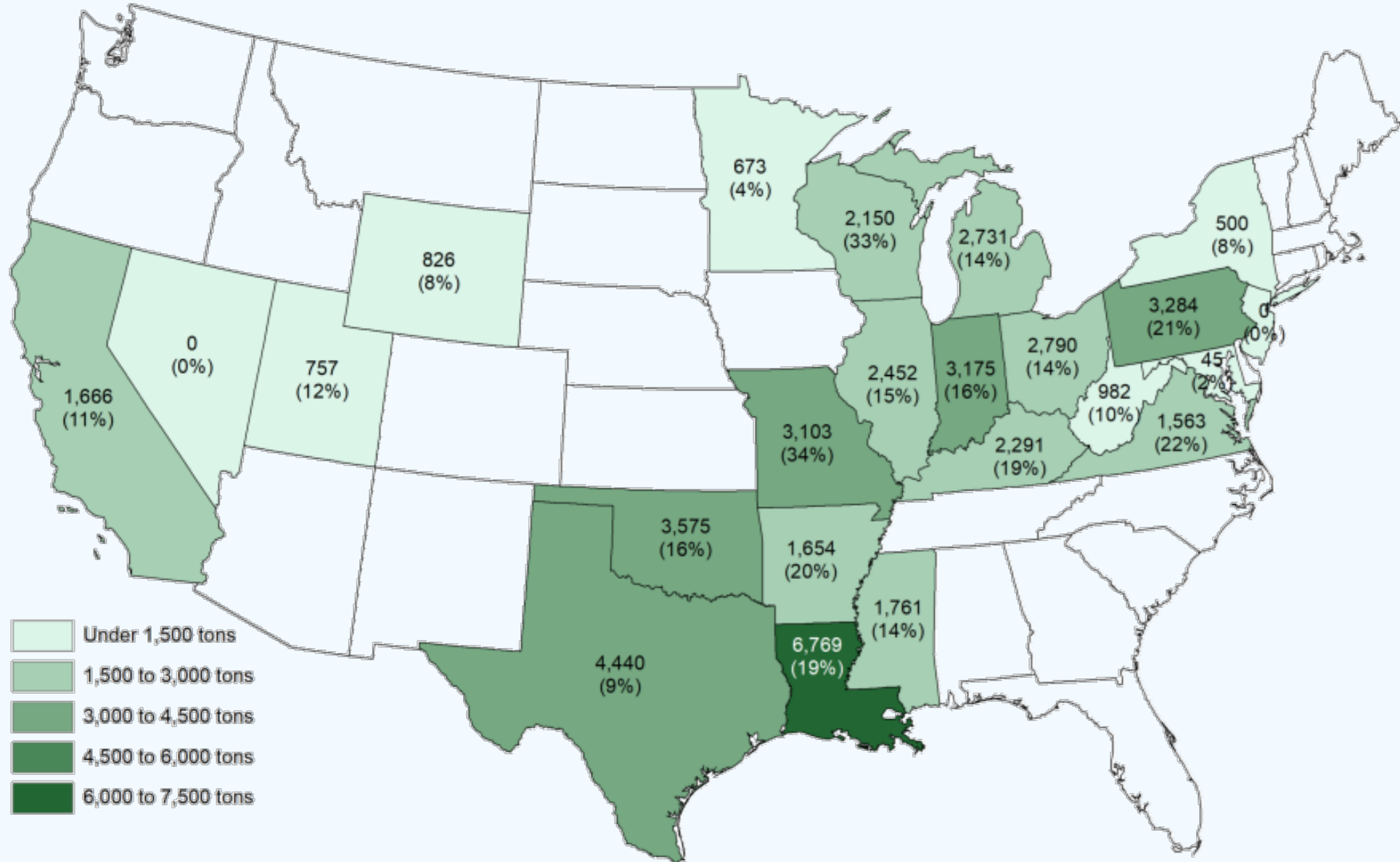
Federal Implementation Plan (FIP)

- EPA intends to implement a FIP on Mississippi
- EPA had 2+ years to make a decision on our iSIP yet waited, but now aims to disapprove our iSIP and implement a FIP by the end of the year.
- FIP would affect emissions budgets for fossil fuel-fired power plants
- **NO_x emissions standards for certain emissions units in identified large industries**
 - reciprocating internal combustion engines in Pipeline Transportation of Natural Gas;
 - kilns in Cement and Cement Product Manufacturing;
 - boilers and furnaces in Iron and Steel Mills and Ferroalloy Manufacturing;
 - furnaces in Glass and Glass Product Manufacturing; and
 - high-emitting, large boilers in Basic Chemical Manufacturing, Petroleum and Coal Products Manufacturing, and Pulp, Paper, and Paperboard Mills.



Map of the United States showing the distribution of total tons of waste generated by county in 2012. The map is color-coded by the amount of waste generated, with a legend indicating five categories: Under 1,500 tons (lightest green), 1,500 to 3,000 tons, 3,000 to 4,500 tons, 4,500 to 6,000 tons, and 6,000 to 7,500 tons (darkest green). Each state is labeled with the total tons and the percentage of the total waste generated in that state.

State	Total Tons	Percentage
Alabama	1,761	14%
Alaska	0	0%
Arizona	0	0%
Arkansas	1,654	20%
California	1,666	11%
Colorado	826	8%
Connecticut	0	0%
Delaware	45	0%
District of Columbia	982	10%
Florida	0	0%
Georgia	0	0%
Hawaii	0	0%
Idaho	0	0%
Illinois	2,452	15%
Indiana	3,175	16%
Iowa	0	0%
Kansas	0	0%
Kentucky	3,103	34%
Louisiana	6,769	19%
Maine	0	0%
Maryland	1,563	22%
Massachusetts	0	0%
Michigan	2,731	14%
Minnesota	673	4%
Mississippi	0	0%
Missouri	0	0%
Montana	0	0%
Nebraska	0	0%
Nevada	0	0%
New Hampshire	0	0%
New Jersey	3,284	21%
New Mexico	0	0%
New York	500	8%
North Carolina	0	0%
North Dakota	0	0%
Ohio	2,790	14%
Oklahoma	3,575	16%
Oregon	0	0%
Pennsylvania	2,291	19%
Rhode Island	0	0%
South Carolina	0	0%
South Dakota	0	0%
Tennessee	0	0%
Texas	4,440	9%
Utah	0	0%
Vermont	0	0%
Virginia	0	0%
Washington	0	0%
West Virginia	0	0%
Wisconsin	2,150	33%
Wyoming	0	0%



Monitoring Sites in MS

Cleveland – *Ozone, $PM_{2.5}$*

Gulfport - *Ozone, $PM_{2.5}$*

Hattiesburg – *$PM_{2.5}$*

Hernando - *Ozone, $PM_{2.5}$*

Jackson - *Ozone, $PM_{2.5}$*

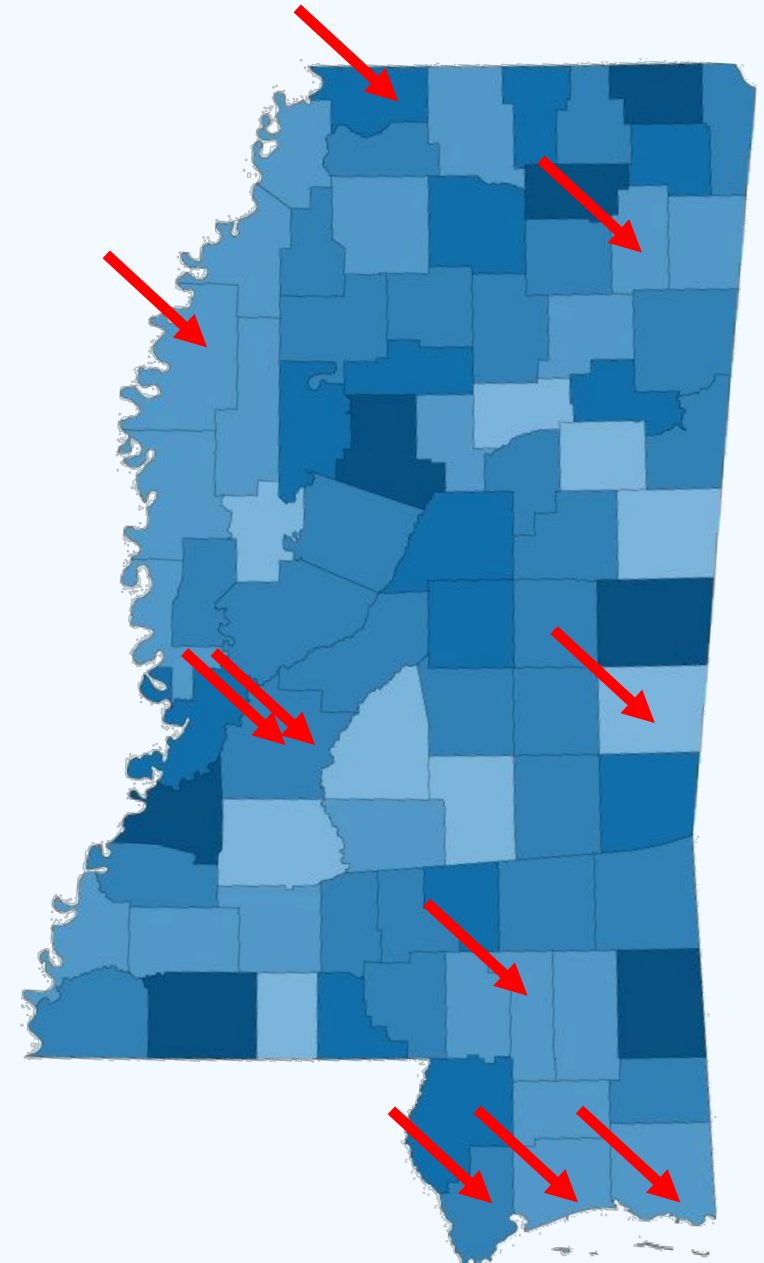
Jackson (N-Core) - *Ozone, $PM_{2.5}$, PM_{10} , CO , NO_y , SO_2*

Meridian - *Ozone*

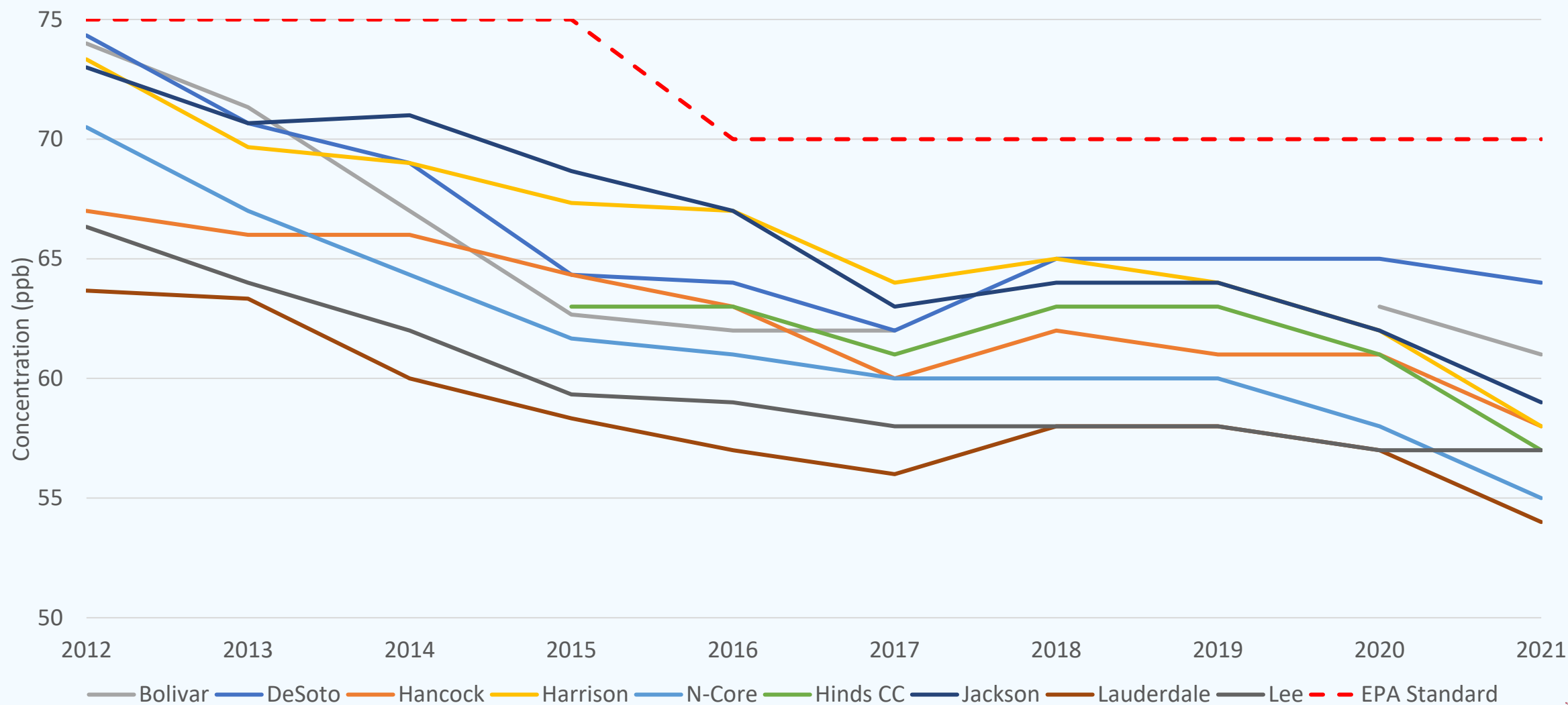
Pascagoula - *Ozone, $PM_{2.5}$, CO , NO , NO_2 , NO_x , SO_2*

Tupelo - *Ozone*

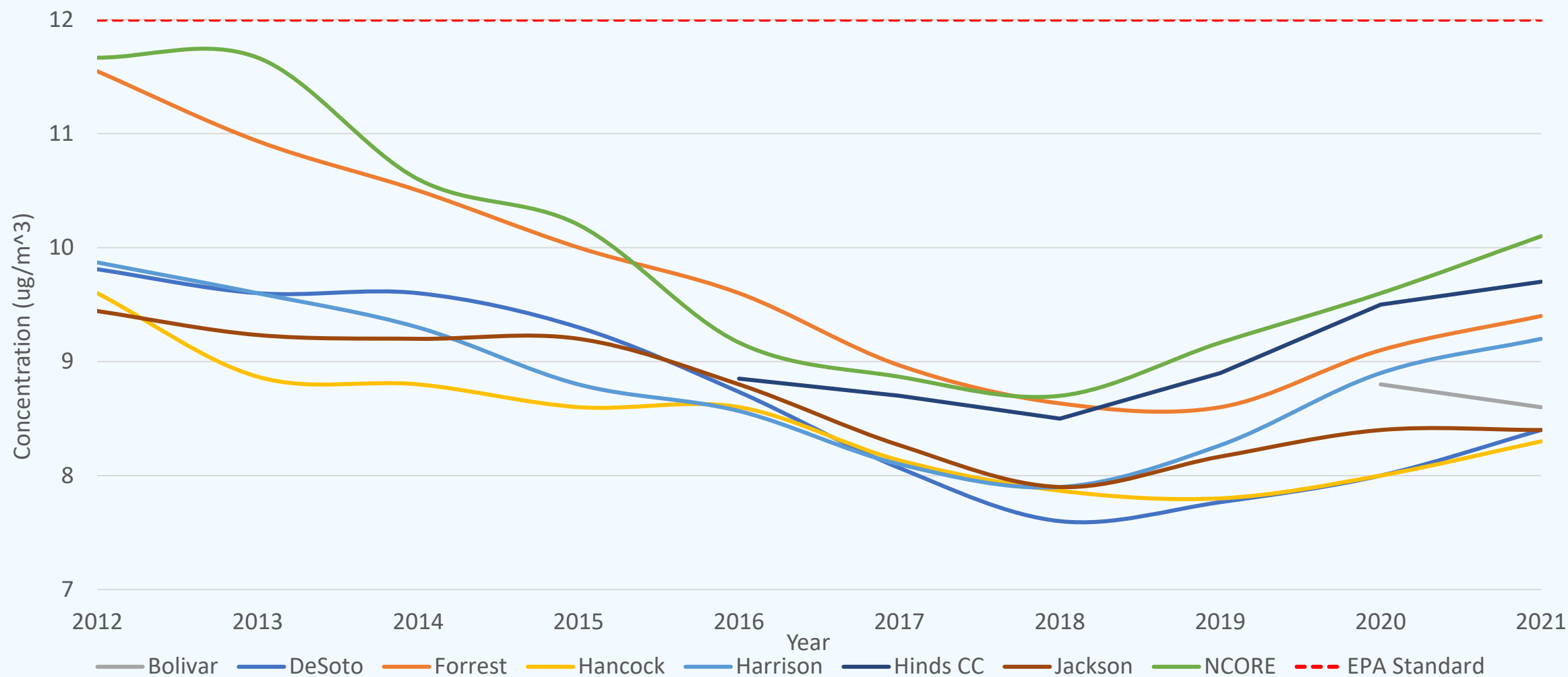
Waveland - *Ozone, $PM_{2.5}$*



Mississippi Ozone Trends



Mississippi PM_{2.5} Trends



NAAQS reconsiderations for PM_{2.5} and Ozone

- The previous EPA administration issued separate decisions to retain previously set NAAQS (standards) for both PM_{2.5} (annual standard) and O₃
- In 2021 the new administration announced their intention to reconsider both

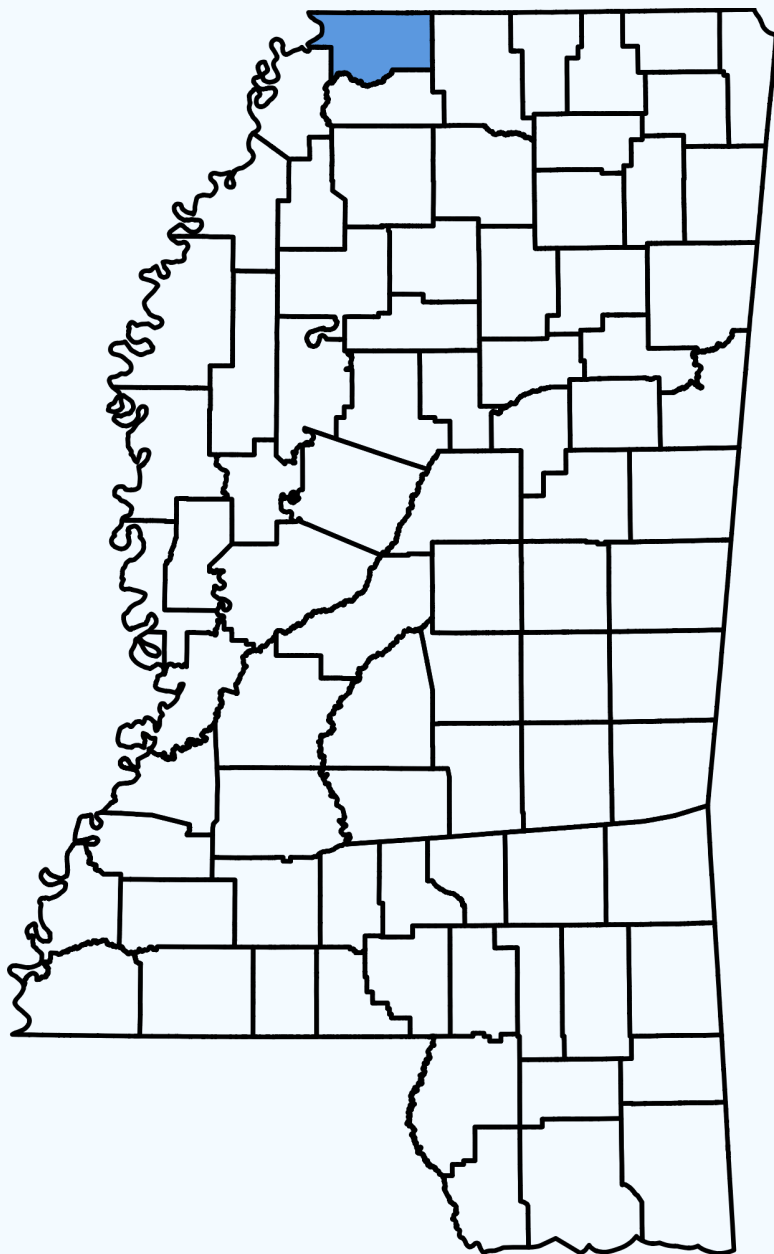
PM_{2.5} expected schedule

- ~ *Propose summer of 2022*
- ~ *Final in Spring 2023*
- ~ *Governors' recommendations due one year later*
- ~ *Designations in 2025 based off 2022-'24 data*

O₃ expected schedule

- ~ *Propose in 2023*
- ~ *Final in 2024*
- ~ *Governors' recommendations due one year later*
- ~ *Designations in 2026 based off 2023-'25 data*

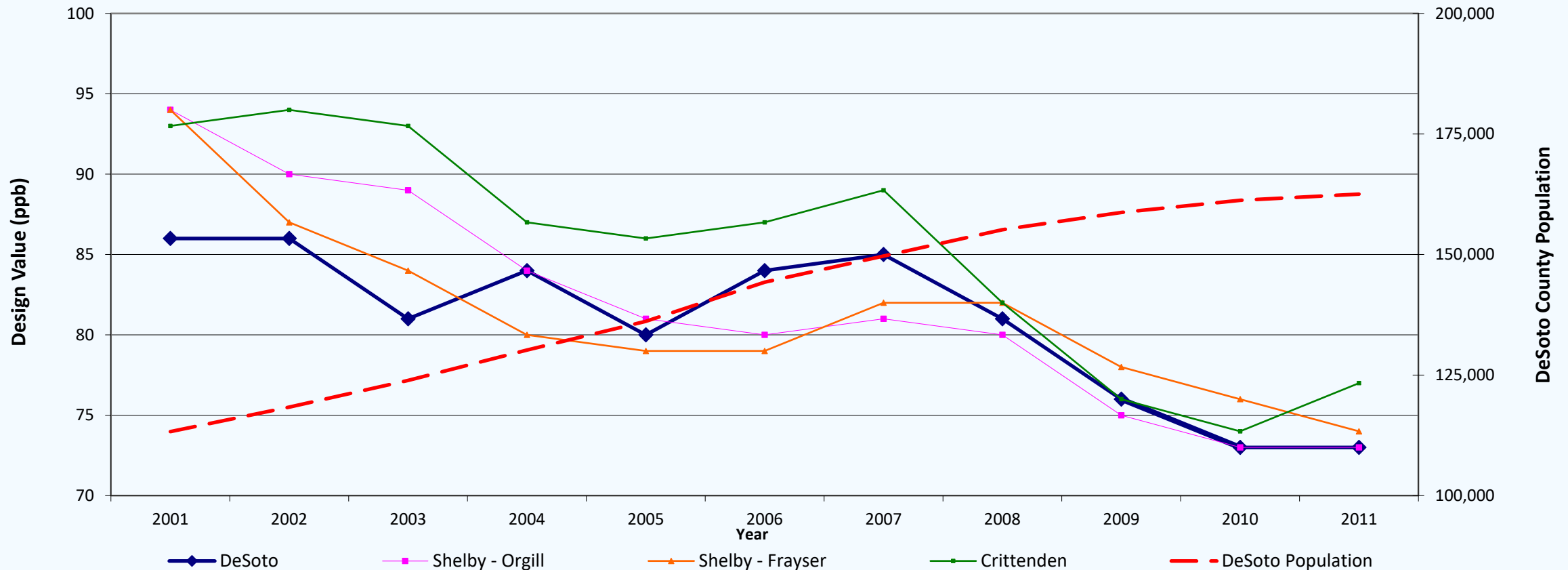




DeSoto County

- In 2012, designated as nonattainment as part of the Memphis Ozone Nonattainment Area
- Redesignated to attainment in 2016
- Under a 20-year maintenance plan

DeSoto County, MS



“Rapid population and VMT growth in a county on the urban perimeter signifies increasing integration with the core urban area”





Questions?

