

BECAUSE THERE IS NO PLANET B

INTRODUCING PROJECT CANARY



Thinking differently

- IR cameras are great at pinpointing the source of a leak
- Airborne surveys and satellites are good for regional assessments
- Drones are incrementally better than pickup trucks
- Air sampling systems (eg., Summa) are great for laboratory analysis
- Fixed monitoring trailers can speciate and potentially attribute source
- Continuous, affordable, fence line offers some significant advantages



Low cost, simple to
deploy, continuous
perimeter monitoring



Low cost, simple to
deploy, continuous
perimeter monitoring





Low cost, simple to
deploy, continuous
perimeter monitoring



Continuous Methane Monitoring

Every few minutes Canary wakes up
Measures methane and VOC's
Reports to the Cloud

and Generates an Alert if there is a Leak



It works like a smoke detector
for fugitive gas emission events



Dashboard

Current Readings

Avg tVOC = 0.33 ppm
 Max tVOC = 1.1 ppm
 Min tVOC = 0.068 ppm
 Temperature = 45 F
 Humidity = 80%
 Pressure = 30.01 in

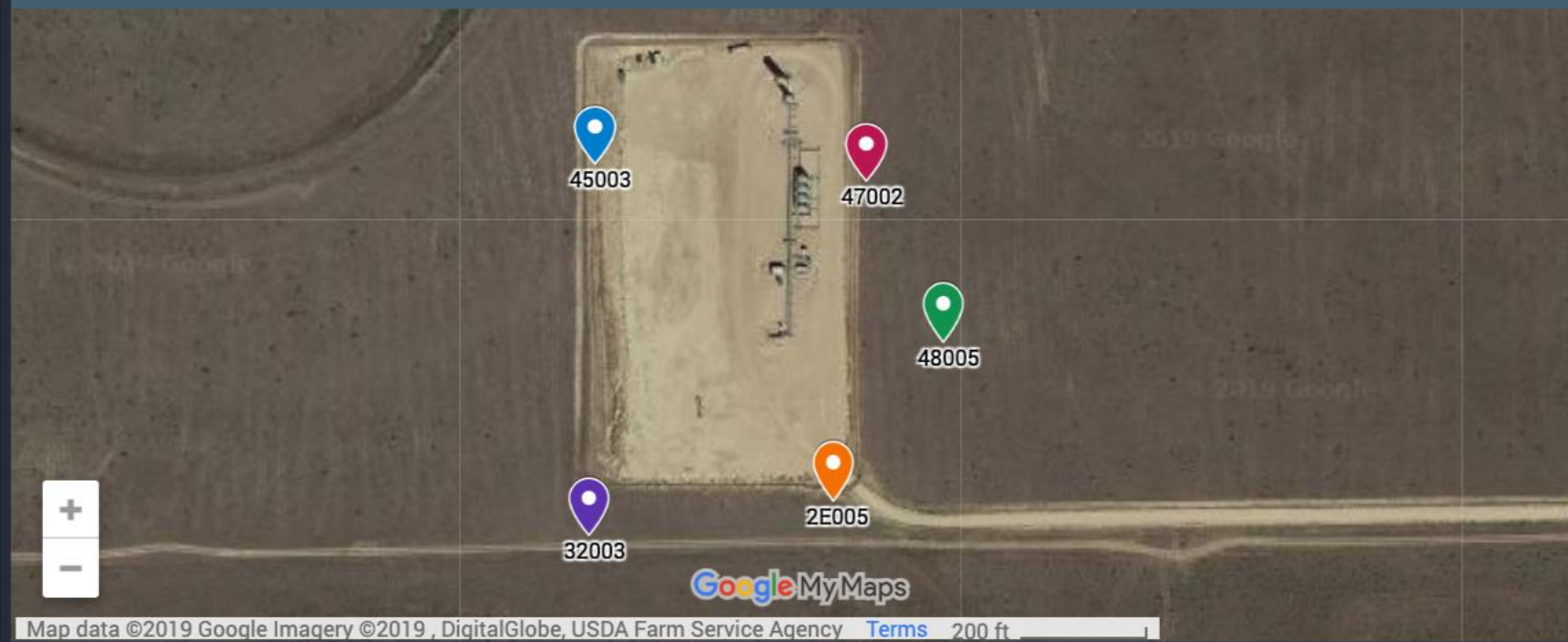
a few seconds ago

Wind Direction



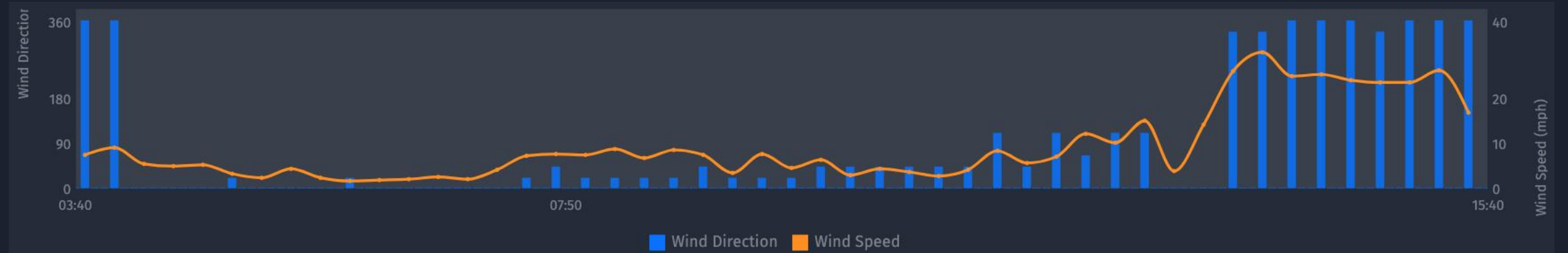
13 minutes ago

Overview ★



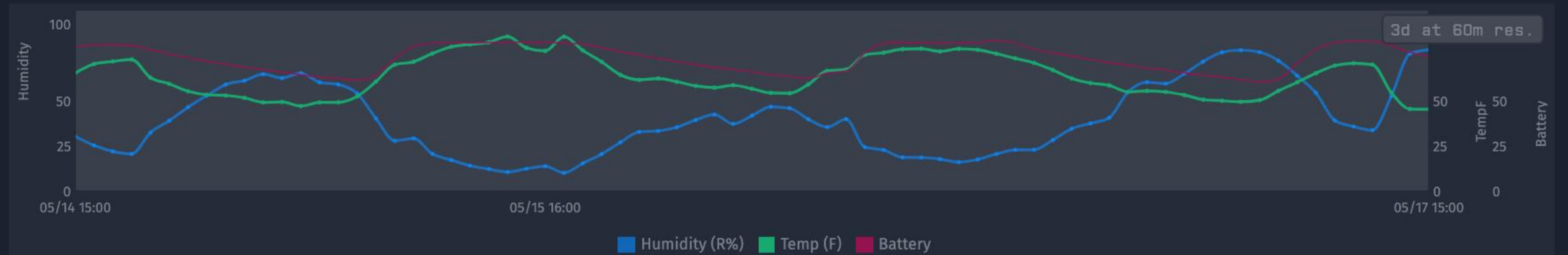
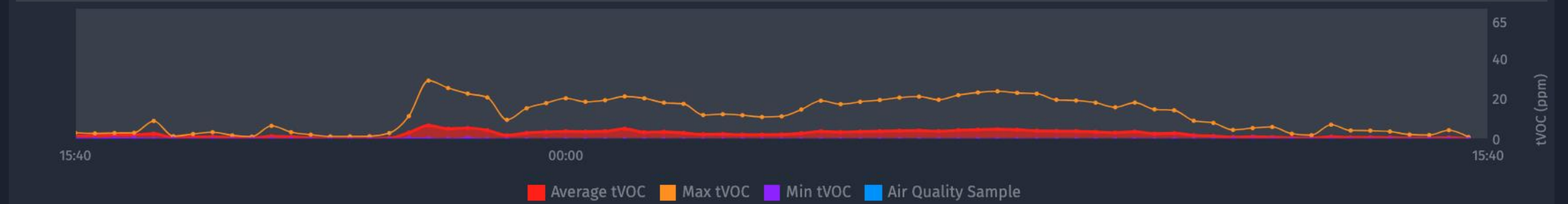
tVOC Detail

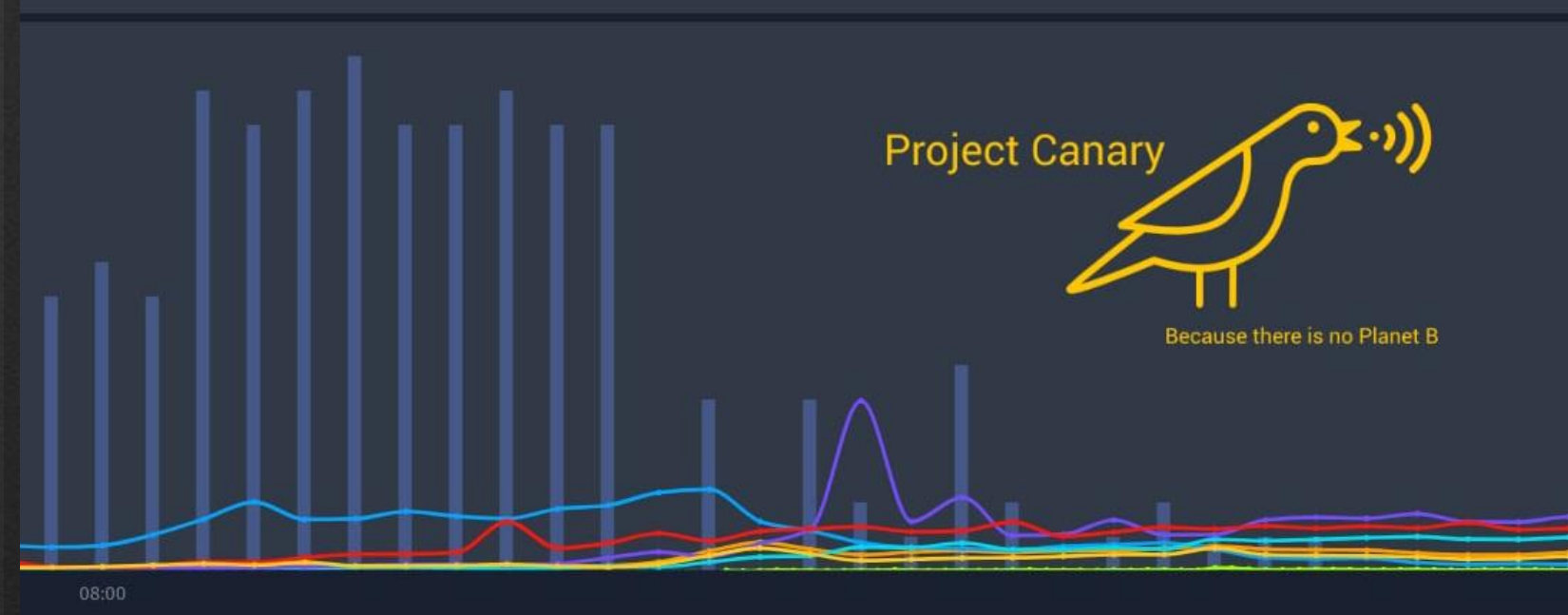
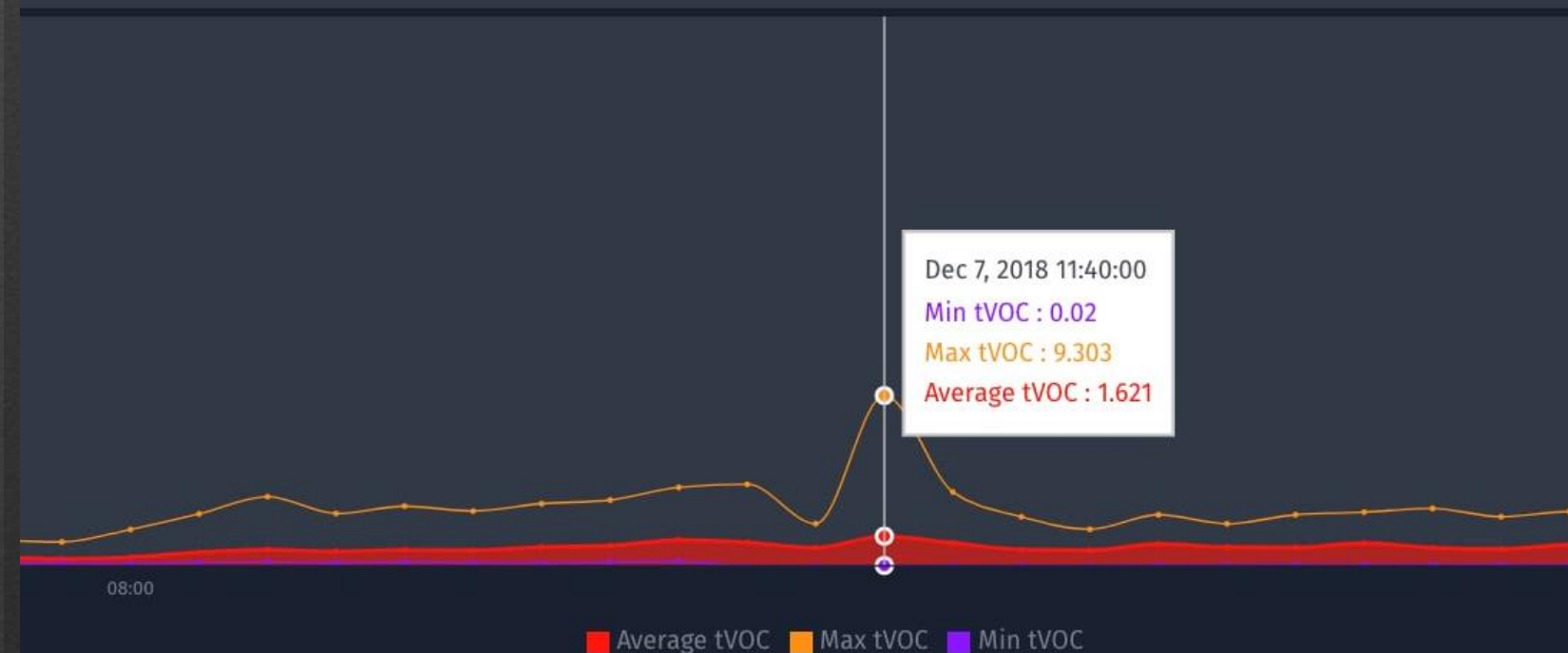
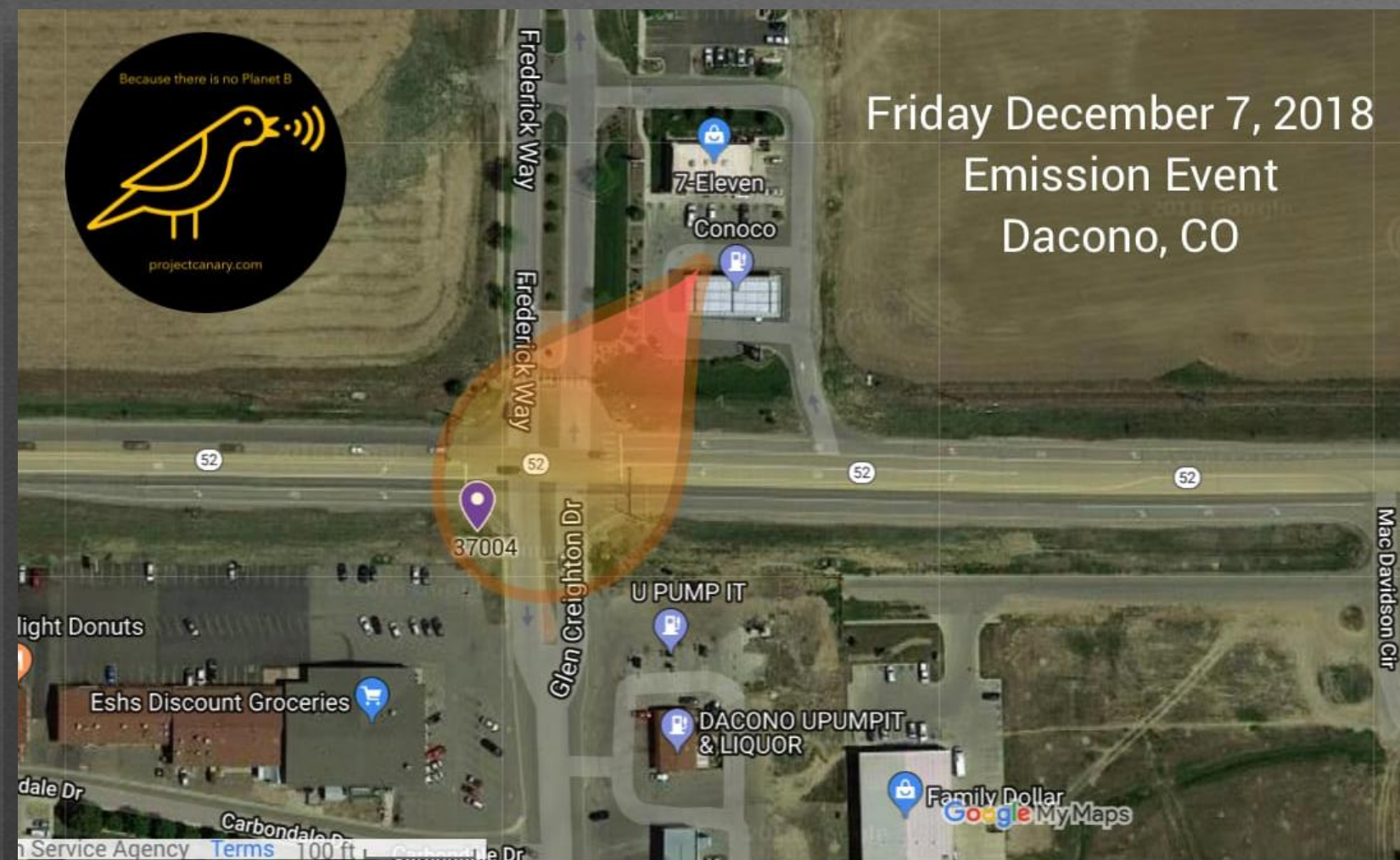
24h at 20m res.



VOC Average [ppm]

24h at 20m res.





Technical Features

- Every few minutes each device transmits data over LTE
- tVOC, humidity, temp, Lat/Lon, datetime, UUID, and more
- Onboard environmental compensation software
- Dual tVOC sensors in each unit enable independent data verification
- Telemetry detection algorithms continuously monitor for outage
- Differentiating 'normal' operations from an actual leak
- Thresholds in both duration and tVOC readings trigger email/SMS alerts to operator LDAR teams





projectcanary.com - 720-432-9767

David Armitage, CEO - darmitage@projectcanary.com

