



# LDEQ Mobile Air Monitoring Lab (MAML)



Jason Meyers, P.E.

Air Planning & Assessment Division

August 26, 2019



















# Capabilities

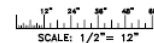
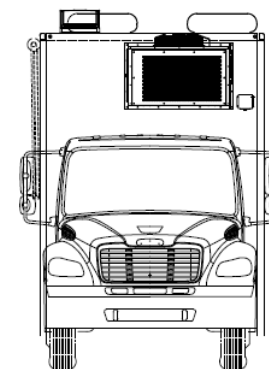
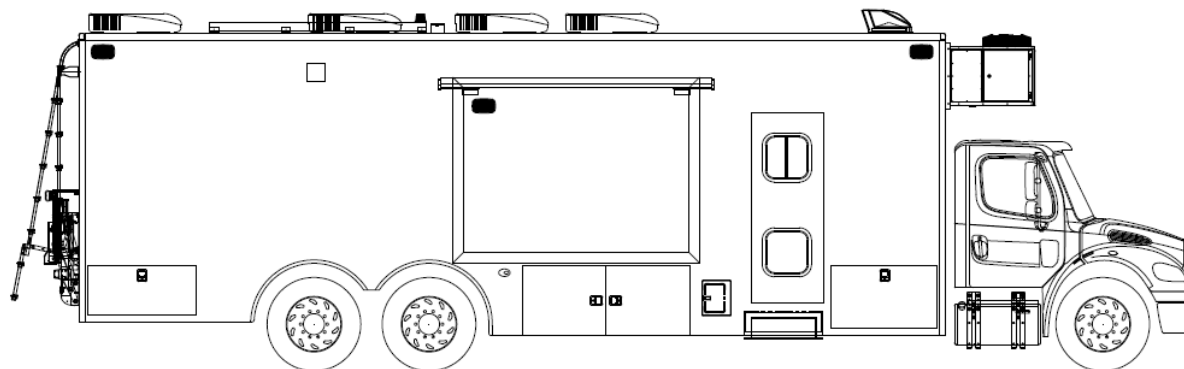
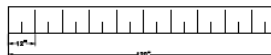
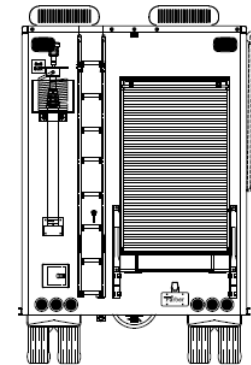
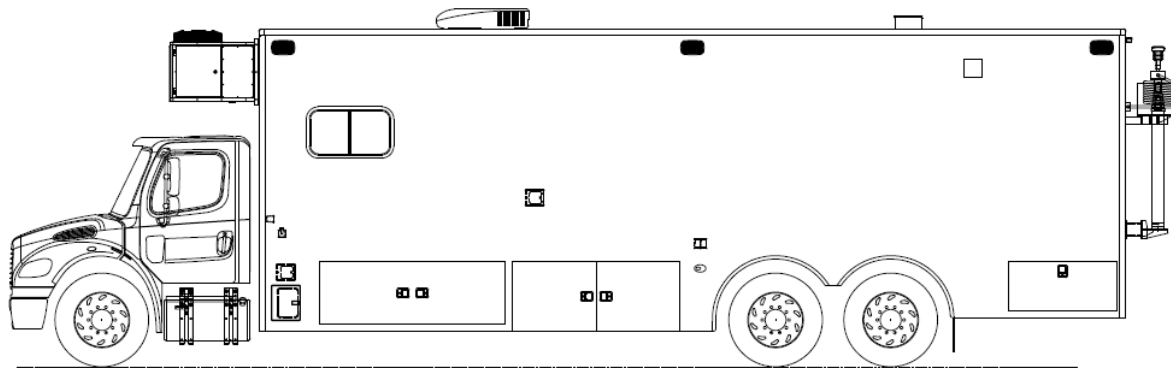
- Criteria Pollutant Monitors:
  - Ozone ( $O_3$ )
  - Nitrogen Oxides ( $NO_x$ )
  - Sulfur Dioxide ( $SO_2$ )
  - Carbon Monoxide (CO)
  - Particulate Matter 2.5 ( $PM_{2.5}$ )
- Additional Monitors:
  - Hydrogen Sulfide ( $H_2S$ )
  - Mercury (Hg)
  - Methane/Non-Methane Hydrocarbons ( $CH_4$ /NMHC)



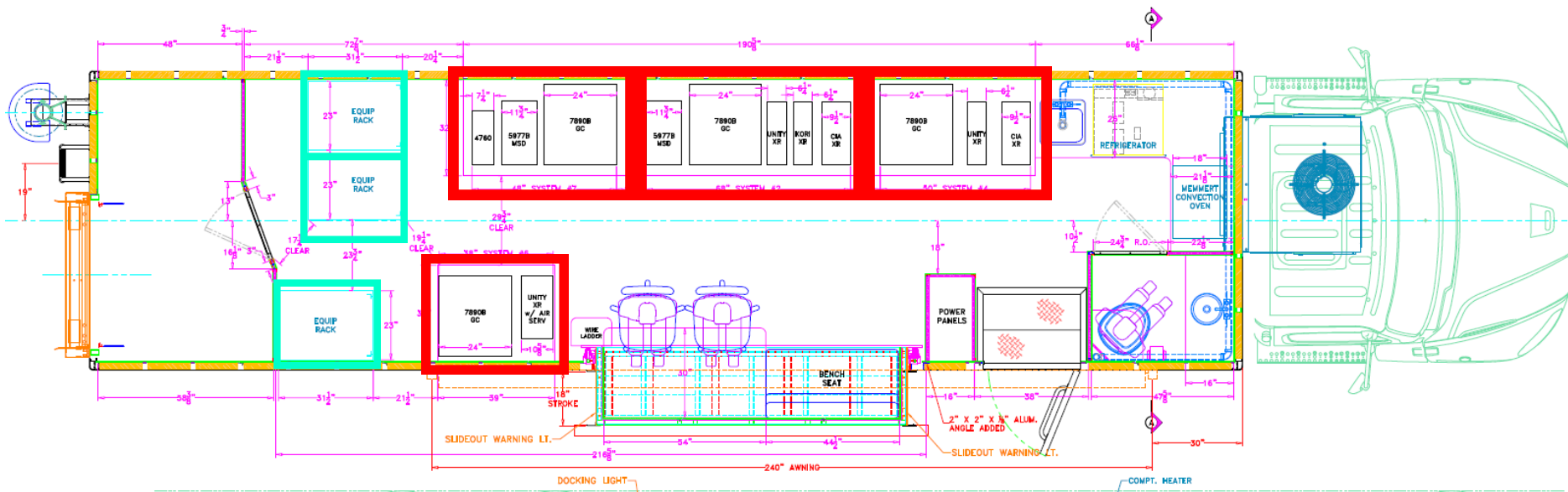
# Capabilities

- TO-15 Analysis: 56 Target Analytes with GC/MS
- Meteorological Sensors
  - Wind Speed
  - Wind Direction
  - Temperature
  - Barometric Pressure
  - Relative Humidity





CUSTOMER APPROVAL		REVISION HISTORY		BODY		DESIGN ENGINEER		CUSTOMER	
DATE		REV	DESCRIPTION	DATE	DESCRIPTION	DATE	DESCRIPTION	DATE	DESCRIPTION
		1	OK		B. HAAG	04-04-10	B. HAAG		LDEQ - MAML
		2					G. CAR		THE PRODUCTION DRAWING
		3							
		4							
		5							
		6							
		7							
		8							
		9							
		10							
		11							
		12							
		13							
		14							
		15							
		16							
		17							
		18							
		19							
		20							
		21							
		22							
		23							
		24							
		25							
		26							
		27							
		28							
		29							
		30							
		31							
		32							
		33							
		34							
		35							
		36							
		37							
		38							
		39							
		40							
		41							
		42							
		43							
		44							
		45							
		46							
		47							
		48							
		49							
		50							
		51							
		52							
		53							
		54							
		55							
		56							
		57							
		58							
		59							
		60							
		61							
		62							
		63							
		64							
		65							
		66							
		67							
		68							
		69							
		70							
		71							
		72							
		73							
		74							
		75							
		76							
		77							
		78							
		79							
		80							
		81							
		82							
		83							
		84							
		85							
		86							
		87							
		88							
		89							
		90							
		91							
		92							
		93							
		94							
		95							
		96							
		97							
		98							
		99							
		100							







# Equipment

In addition to equipment on current MAML:

- Ammonia Analyzer
- GC/FID
- GC/Pulsed Flame Photometric Detector
- GC/MS for soil and water analysis
  - (Only installed on one MAML)



# Challenges

## 1. State purchasing rules





# Delivery?

September 2019

October 2019



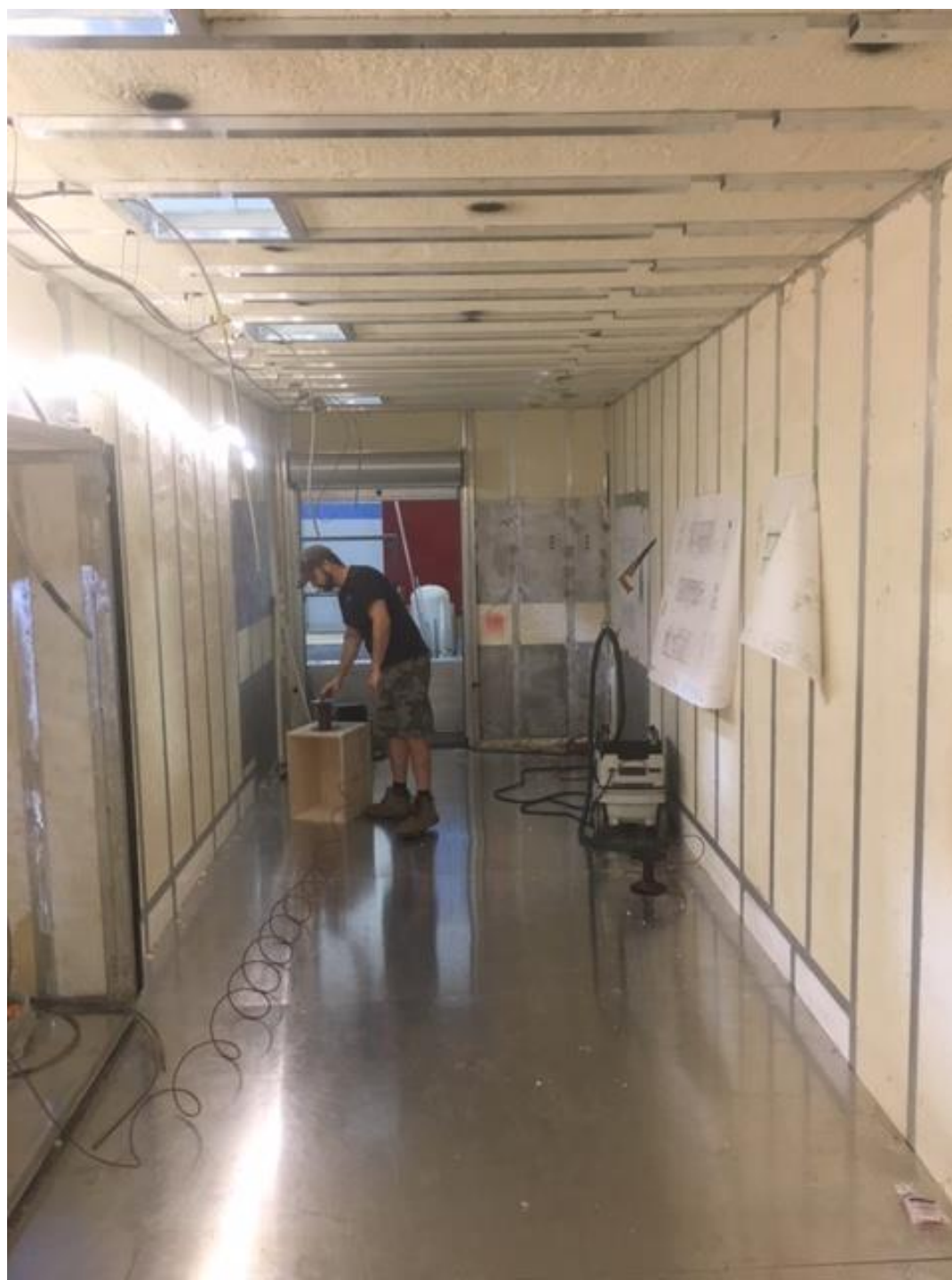












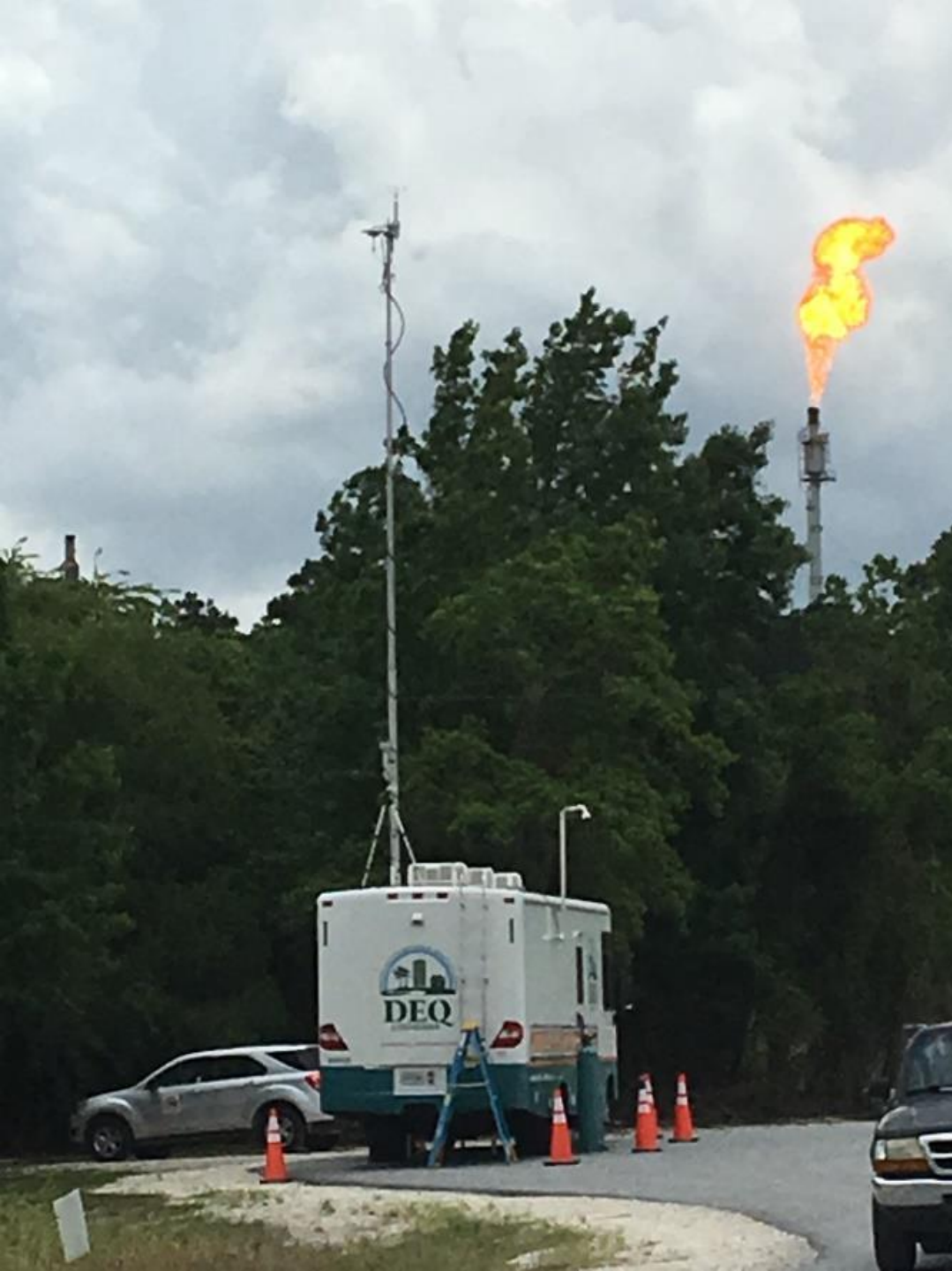
LOUISIANA DEPARTMENT OF ENVIRONMENTAL QUALITY  
**MOBILE AIR MONITORING LAB**



LOUISIANA DEPARTMENT OF ENVIRONMENTAL QUALITY

**MAML**

MOBILE AIR MONITORING LAB



Burning  
Questions?





## Contact:

Jason Meyers, P.E.

(225) 219-3408

[jason.meyers@la.gov](mailto:jason.meyers@la.gov)